

Migration Software for I18N (Internationalization) Internationalization Tool World Wide Navi

希望可以成为滋润中国人民生活的科技之水
更加安心的每一天，这是我们每个人的愿望。
领先时代的最尖端技术并站在尊重每个人尊严

यह क्या है?
यह रेडियो है।
क्या यह सौगात है?
जी नहीं, यह सौगात नहीं है।
क्या

December, 2008
Kokusaika JP, Inc.
<http://www.kokusaika.jp/>

Le ciel est, par-dessus le toit
Si bleu, si calme!
Un arbre, par-dessus le toit
Berce sa palme.

Agenda

- Presentation on Company, Products and Business
 - **Yoichi Suehiro**
Founder, President and CEO
- **World Wide Navi** explanation and demo
 - **Junichi Okamura**
Chief Engineer

Introduction of Kokusaika JP, Inc.

Kokusaika JP, Inc. was established in June 2006 to do business on software internationalization.

“Kokusaika” is a Japanese word meaning “internationalization”. “JP” comes from the ISO country code for Japan.

Kokusaika JP’s mission is to help customers conduct their global business efficiently and effectively with internationalized software.

Kokusaika JP develops and sells **World Wide Navi**, a software internationalization tool. We also sells **Sisulizer**, a localization tool from Finland.

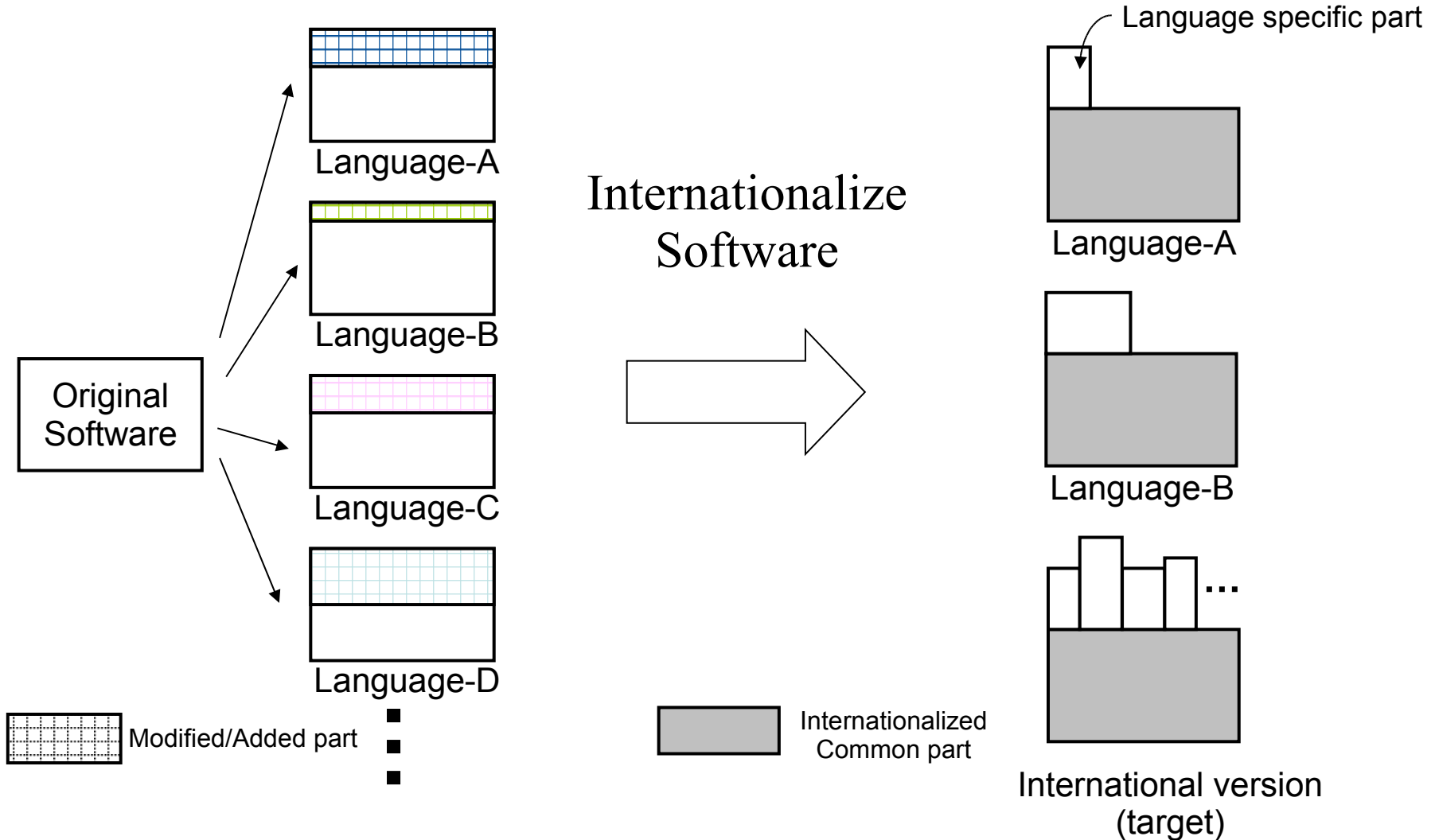
Why we do internationalization?

- Yoichi Suehiro has been working in the software internationalization field about 20 years.
(DEC > Compaq > HP, BST, KJP)
- Started from UNIX OS Japanese localization. And then, worked on internationalization of UNIX OS and layered software, in both standardization and product development.
- Involved in internationalization work for X/Open, ISO C, ISO POSIX, OSF/1 and Linux OS (FSG/Open18n).
- We've found that internationalization is known only to limited people in the world. Many people still continue to write software for his/her language/country without considering the rest of the world.

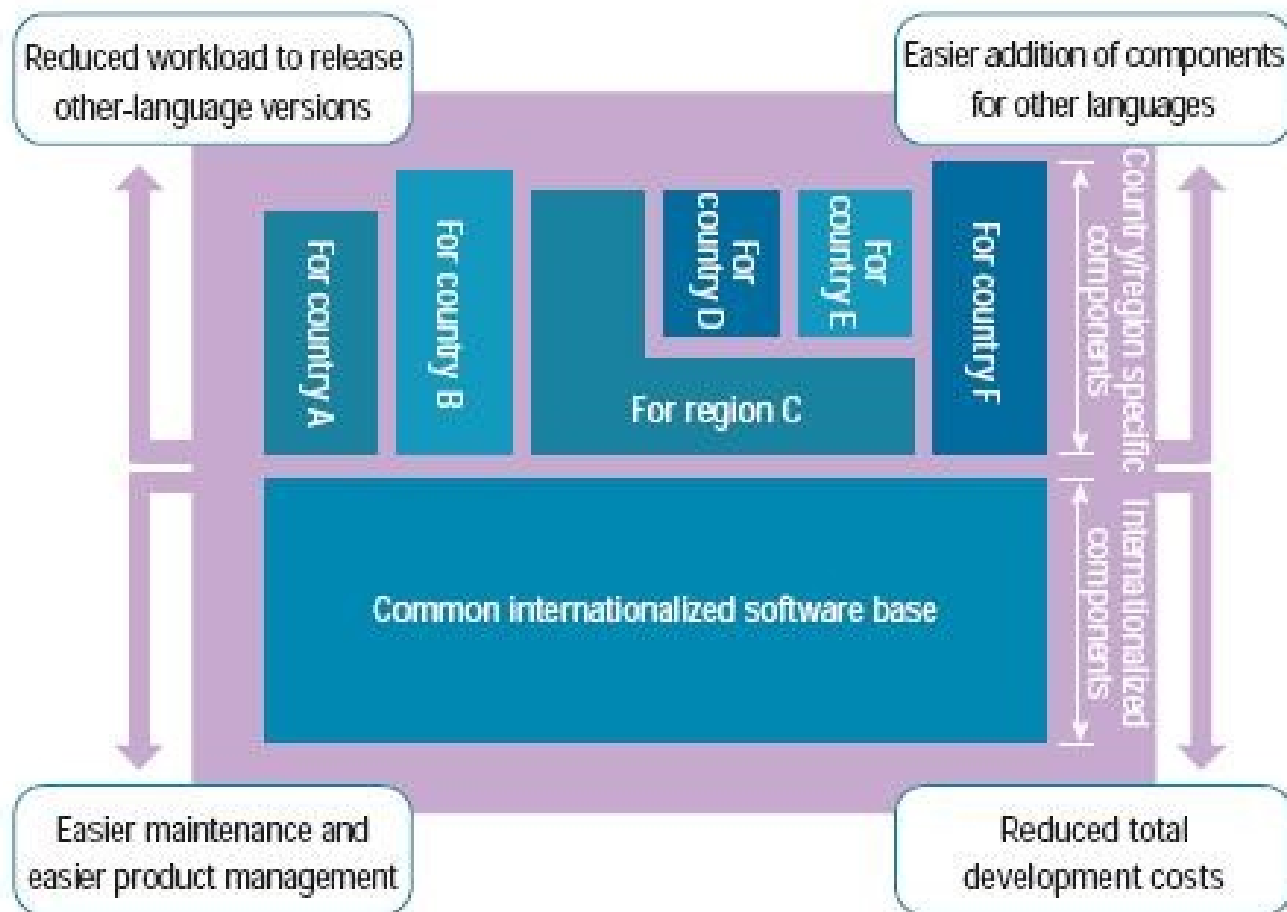
What is I18N? (concept)

- I18N = (Software) **Internationalization**
[18 characters between 'I' and 'N']
 - > the process of planning and implementing products and services so that they can easily be adapted to specific local languages and cultures, a process called **localization**.
 - **localization** => L10N
- Once I18N is done, main task of L10N becomes translation.

What is I18N? (concept)

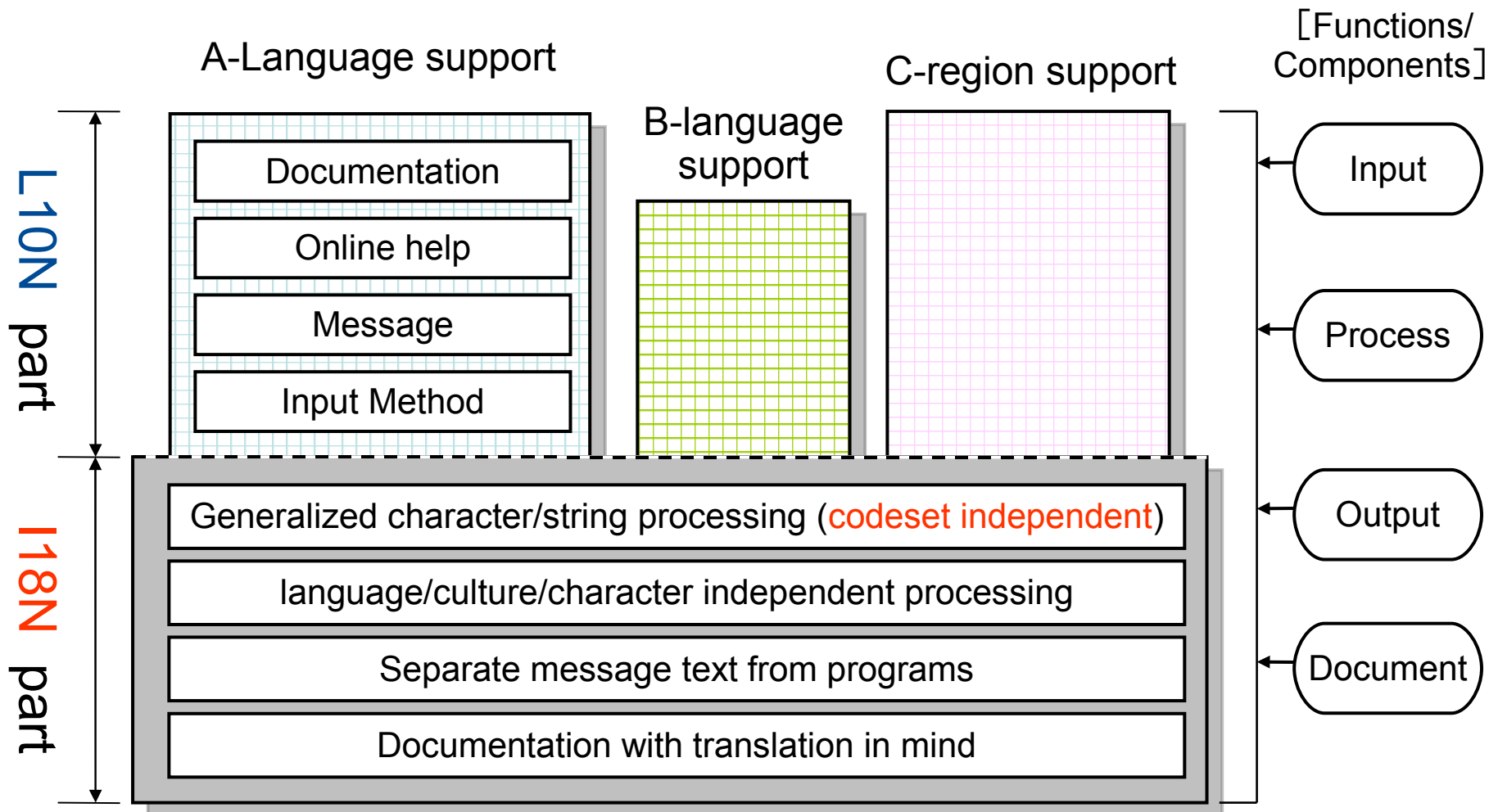


What is I18N? (concept)

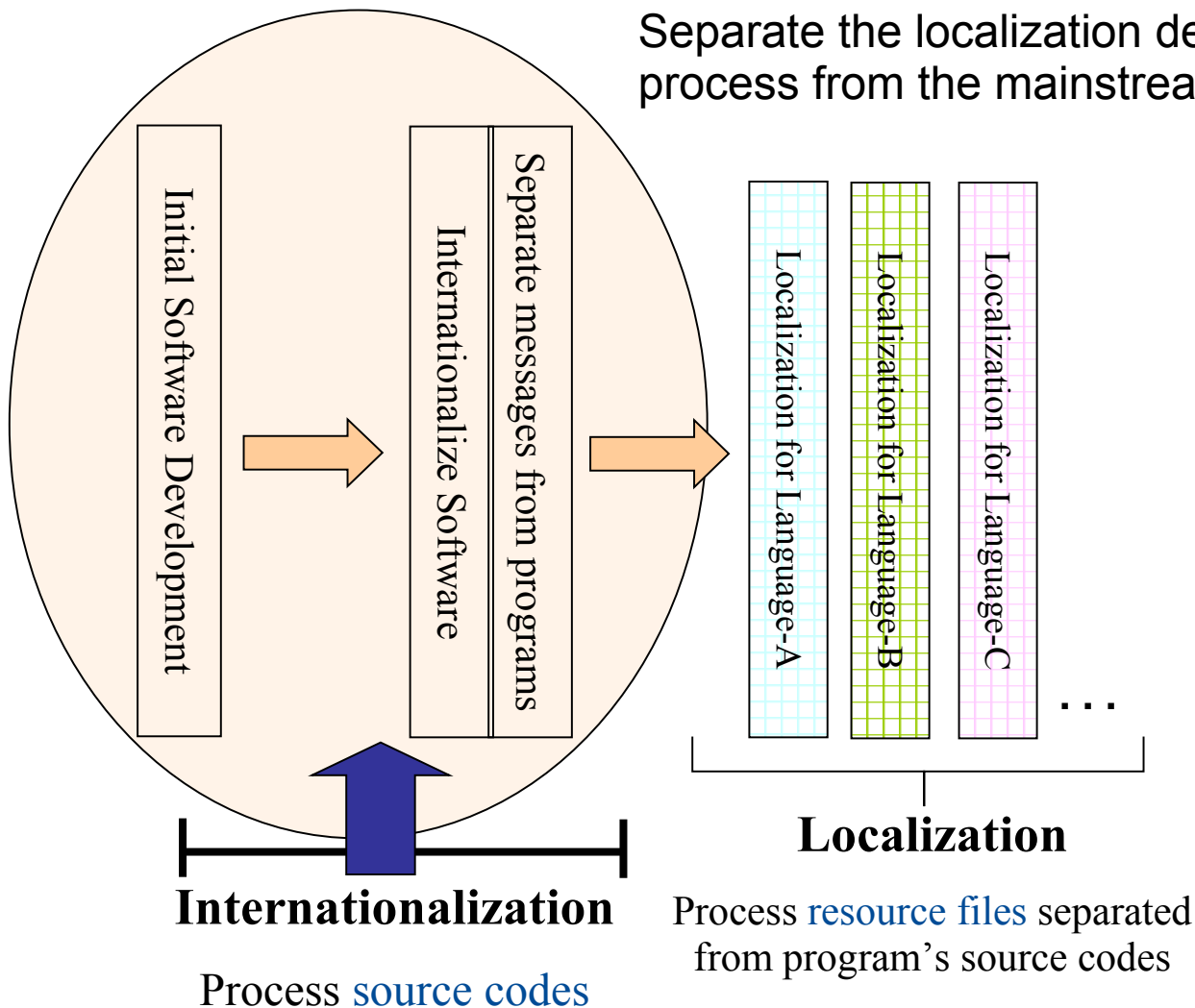


➔ Big advantages for global business

What is I18N? (concept)



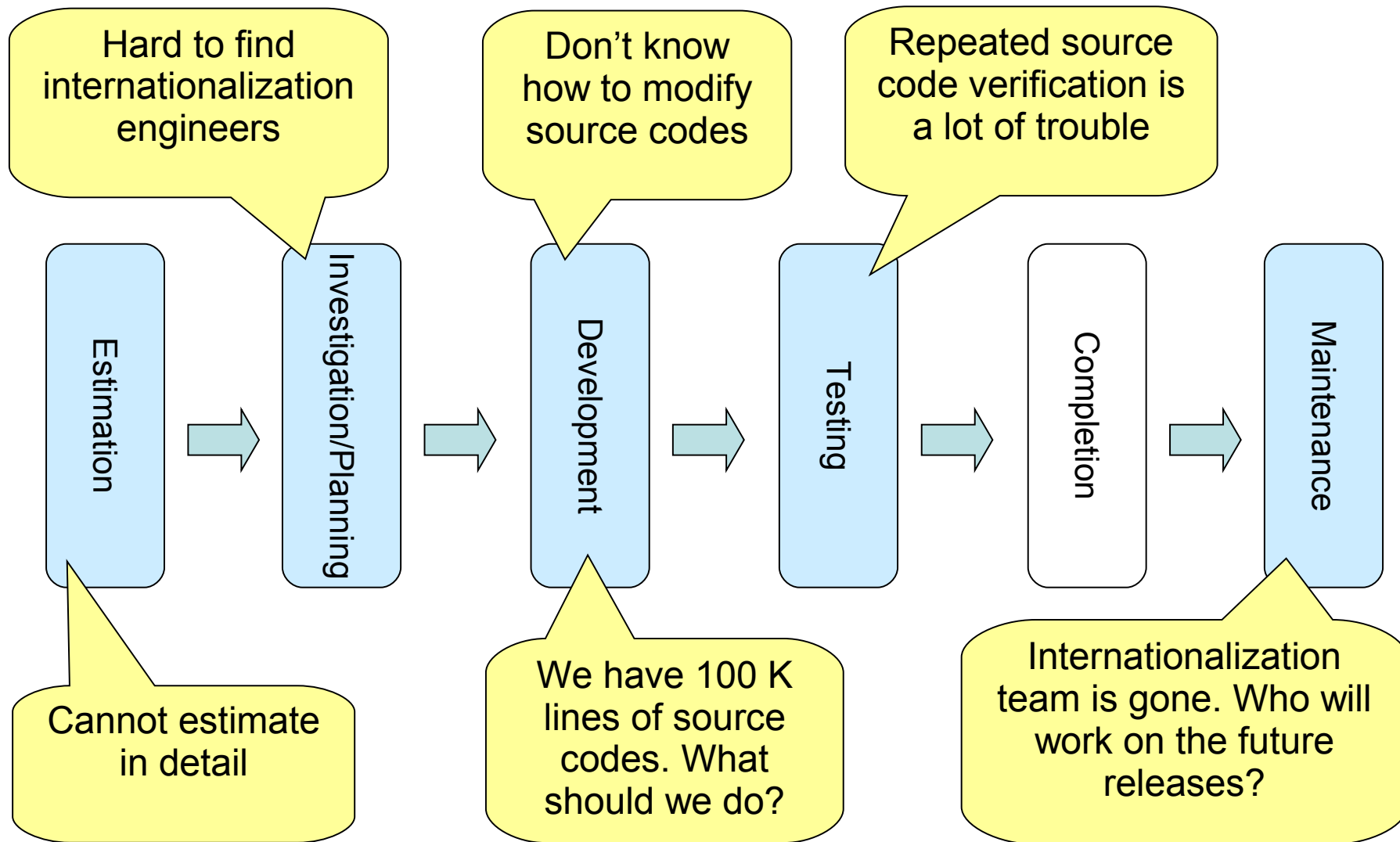
What is I18N? (concept)



I18N development:

- What: source codes
- Who: Programmers
- Part of mainstream development
- Mostly done internally because of IP protection
- Hard to find experienced engineers in this area
- Not only technical but management skills are required

Problems in Software Internationalization work

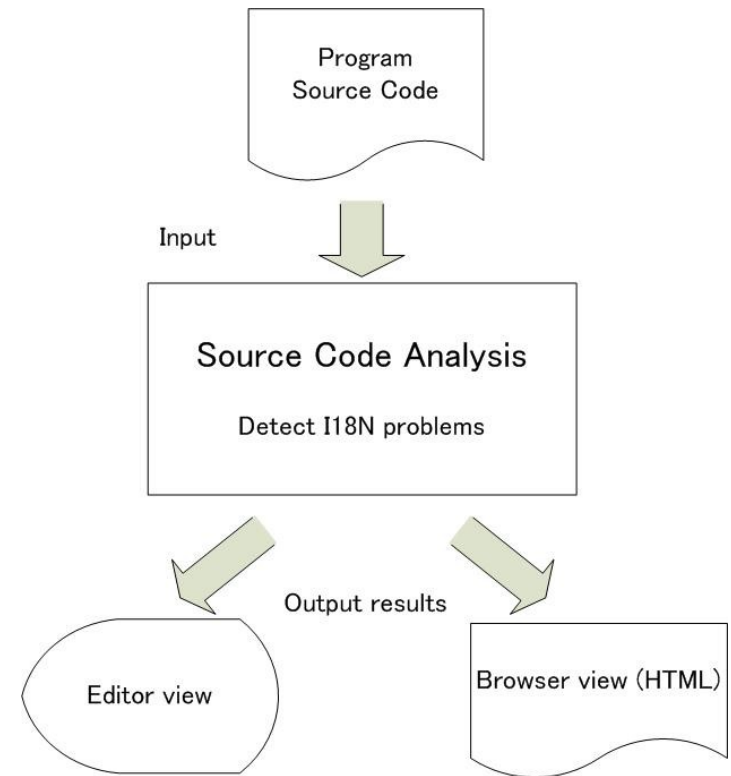


Migration for I18N

- What to do
 - Find problems and modify source codes
 - Needs to scan all of the source codes
- There is a good means to ease your I18N work
 - Please use [World Wide Navi](#)
 - Speed, Quality, Knowledge
 - No food, no drink, no sleep
 - Automatic migration for some specific needs

Software Internationalization Tool World Wide Navi (a.k.a. wwnavi)

- Analyzes program source codes and indicates how to modify them in order to make them internationalized.
- Supports C/C++/Java
- By using wwnavi, developers acquire the know-how for international programming.
- Internationalized.
English UI and Japanese UI
- Free trial download available from <http://www.kokusaika.jp/>

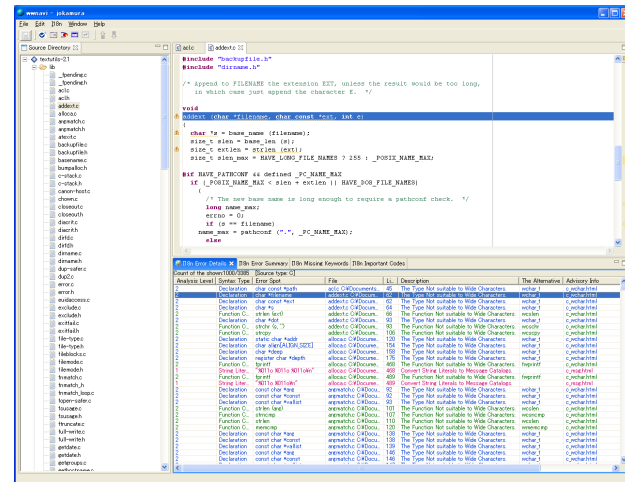


Features (1)

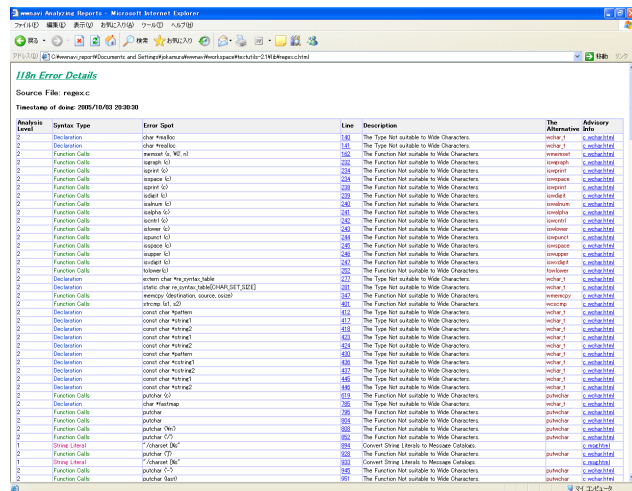
- Intelligent analysis function
 - Rather than through exact string matching, World Wide Navi analyzes programs after a syntax analysis appropriate to the respective programming language.
 - It also has a function to exclude a sequence of source codes from the analysis.
- Preset diagnostics rules
 - Standard diagnostic rules are available upon installation and can be used immediately.
- Customizable analysis rules
 - The analysis rules can be easily added or changed to suit the target programs by using the GUI.
 - A set of rules can be defined for each project or customer and enforce standardized coding convention.

Features (2)

- Various modes of usage
 - A batch command
 - A GUI application
 - An Eclipse plug-in
- Various output formats
 - Displayed on screen
 - Written to files in three different formats (HTML, CSV, TEXT)



World Wide Navi GUI



Report in HTML

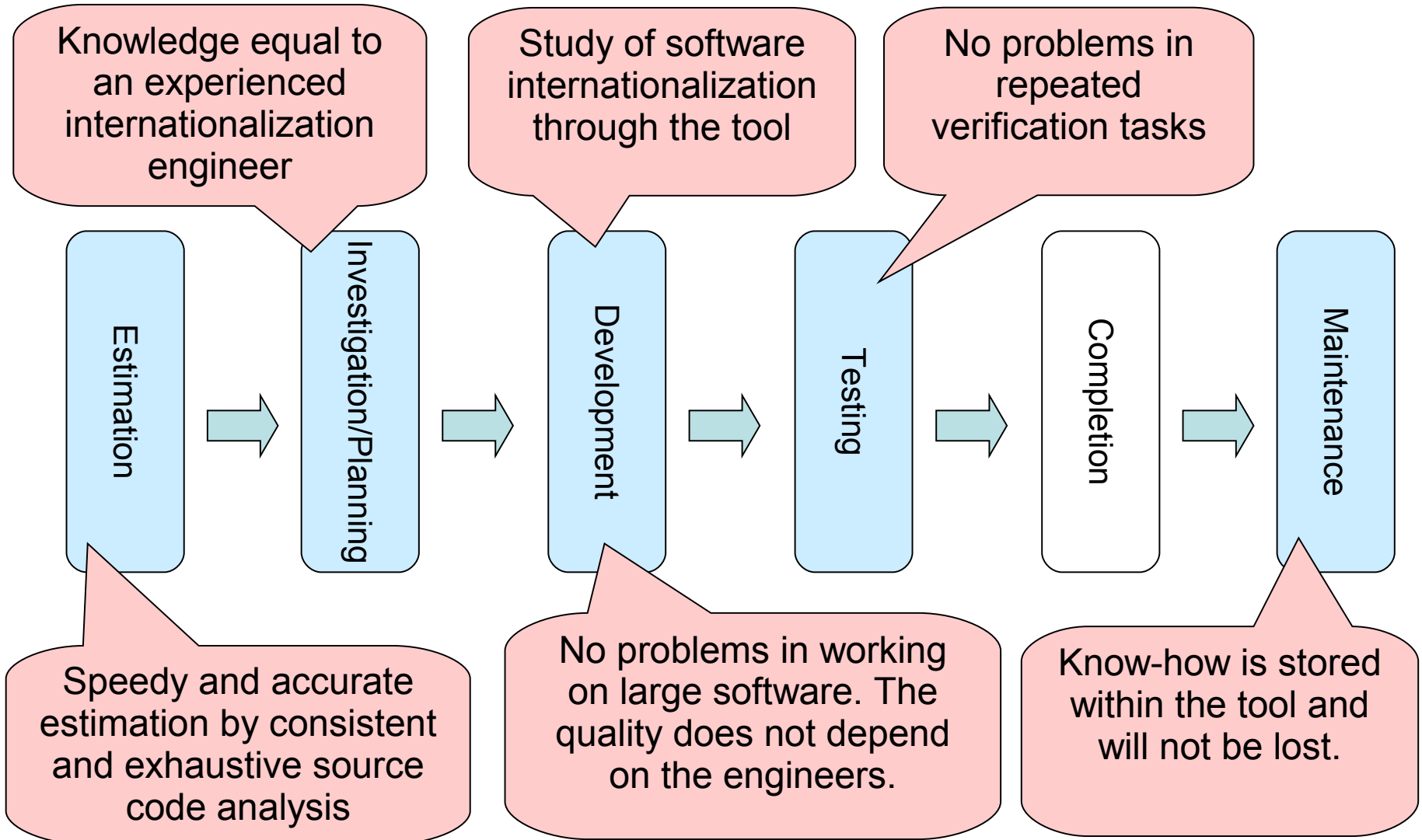
Features (3)

- Multiplatform support
 - Runs on Linux and Windows platform.
 - World Wide Navi is a Java application.
- Multiple programming language support
 - Supports C, C++ and Java.
- Internationalization of World Wide Navi itself
 - The World Wide Navi software itself has been internationalized.
 - GUI is available both in English and Japanese.

Features (4)

- Automatic source code modification (V1.2 or later)
 - Automatic message text externalization
 - Embedded text messages in source codes are moved to an external file and the source codes are modified accordingly.
 - No human errors. Flexible settings for your needs.
 - Java support in V1.2
 - C/C++ support in V1.3
 - C# support and more features for Windows in V1.4
 - More programming languages support in the future versions

World Wide Navi solves the problems in Software Internationalization work



Internationalization, Localization, Asia and FOSS

- Localization is very important for Asian countries.
- FOSS is very important for Asian countries.
 - People may easily go to direct localization. It will create a lot of local language versions without coordination. Localization without internationalization is hard to maintain. It is not sustainable.
- For sustainable localization, internationalization is a must.
- Kokusaika JP can help FOSS internationalization and localization through software tools and services(consulting, training and development).

More on FOSS I18N

- Presentation at AOSS event in Guangzhou (March 2008)
 - “I18N ready? Destination is local and global.”
 - ◆ Every country in the world has a chance to start OSS business.
 - ◆ OSS+I18N can build global OSS business infrastructure.

IPA's OSS Office Application Catalog project

- Kokusaika JP has worked on the IPA's OSS office application catalog project (Nov 2007 – Feb 2008)
 - Created a catalog of OSS office application software for Japanese users (more than 150 applications listed)
 - Research for software -> List up software -> Investigation -> Installation & Test -> Evaluation -> catalog
 - Additional: research for UTF-8 surrogate pair support in OSS
 - Additional: research for I18N readiness of OSS
- The catalog is available at IPA's OSS iPedia.
(<http://ossipedia.ipa.go.jp/>)

wwnavi finds the fact

- I18N readiness of some OSS applications
 - Not perfect but it's fairly good.
 - 4 out of 9 applications were I18N ready.
- By using wwnavi, we can know the real status of I18N readiness.
- I18N helps OSS projects gain more users and developers from all over the world.

I18N is the key to success in the global market.
Kokusaika JP will be your honest partner.

Kokusaika JP, Inc.

<http://www.kokusaika.jp/>

Venture Kanda 407
1-1-5 Uchikanda, Chiyoda-ku,
Tokyo 101-0047 Japan

Email: kjp-sales@kokusaika.jp

TEL: +81-3-5283-9925

FAX: +81-3-5283-9952